

House Overview

At the southwest corner of the site, No.3 Easthill is ideal for gardening, and offers wonderful evening views across to Ben Vorlich.

Continuing the barn theme we created a series of ranges catering for various living needs. The garage and workshop, the living space and the private wing. Interlocked, they wrap around a private south facing courtyard.

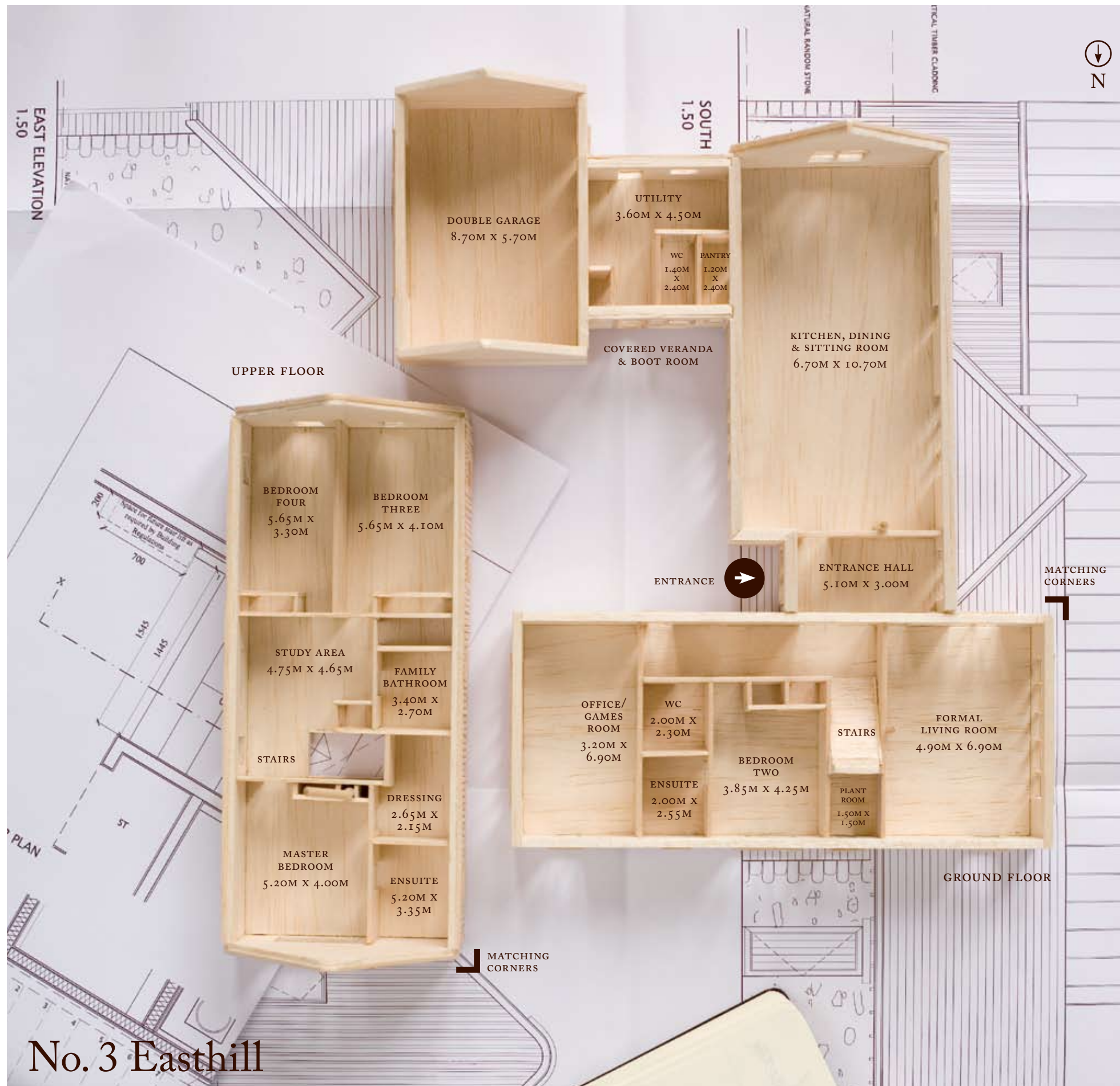
Built from random rubble stone with timber panelled sections, these buildings reflect the agricultural heritage of the site whilst providing light filled living spaces.

Plan



Key features

- 01 KITCHEN, DINING & SITTING ROOM in a large, open plan layout with exposed timber ceiling ties
- 02 FORMAL ENTRANCE HALL
- 03 OFFICE/GAMES ROOM with separate access
- 04 CLOAKROOM
- 05 COVERED VERANDA UTILITY, WC AND BOOT ROOM with bench and storage
- 06 LIVING ROOM with fireplace
- 07 GROUND FLOOR GUEST SUITE with ensuite
- 08 MASTER BEDROOM with dressing room and ensuite (shower and free standing bath)
- 09 TWO FURTHER DOUBLE BEDROOMS with built in wardrobes
- 10 DOUBLE GARAGE and workshop
- 11 MAIN BATHROOM with shower and free standing bath
- 12 PLANT ROOM for all the services



No. 3 Easthill

Acoustics

i Many of the living, kitchen and family room spaces are 1.5 storeys high, four metres from floor to ceiling, with feature timber ties. Stunning, light and airy? Yes. But there was the potential for uncomfortable echoes. That's why we brought in **Arup Acoustics** – the same people who helped design Glyndebourne Opera House – to plan the acoustic treatment of these homes in close consultation with the design team.

